



Wheelwrights Cottage, Main Street, Gilmorton. LE17 5LS

Email: [mahinspections@btinternet.com](mailto:mahinspections@btinternet.com)

Mobile: 07377 894068

## Defects / Snagging Report

Client Name:	(Removed)
Address:	(Removed)
Date Inspected:	1/4/2022
Property Type:	5 bedroom house
Inspectors Initials:	MH
Developer:	(Removed)
Development Name:	(Removed)
Name of House Type:	The Newton
Plot Number:	198
Warranty Provider:	NHBC
Date of Legal Completion:	(Removed)
Weather Conditions:	Dry and sunny

Company Registration No. 12744077





Wheelwrights Cottage, Main Street, Gilmorton. LE17 5LS

Email: [mahinspections@btinternet.com](mailto:mahinspections@btinternet.com)

Mobile: 07377 894068

Priority Issues:	<ul style="list-style-type: none"><li>- Dormer ceilings to Bedroom 1 not insulated</li><li>- Dormer windows to Bedroom 1 not sealed around externally</li><li>- Ensuite 1 extractor fan not working</li><li>- No extractor fan fitted within the utility</li><li>- Front door – daylight seen to the bottom frame</li><li>- French doors to the lounge – daylight seen between the doors and the French door frame head sagging left hand side</li><li>- Lounge wall out of tolerance right hand side French door</li><li>- Taps loose to the wash basin in bathroom/ ensuite/cloakroom</li><li>- Main water isolator fitted below the sink base unit – should be fitted within the sink unit</li><li>- Leak on the waste pipe to kitchen sink/ bathroom wash basin</li><li>- No fixings to the wash basin in Ensuite 2</li><li>- Shower door to ensuite 2 to fit correctly to the bottom runners</li><li>- Carpet to fit correctly to Bedroom 1 to the front of the wardrobe</li><li>- Heating zone 1 operates ground floor and zone 2 operates first floor and bedroom 1 and ensuite 1</li><li>- Doors not closing to the kitchen to hall door</li><li>- Lounge door catching</li><li>- Bedroom 2, 3 and 5, bathroom and ensuite 1 door catching</li></ul>
------------------	--

Company Registration No. 12744077



# Customers Address (Deleted)

SNAGGING INSPECTION

Friday, 01 April 2022

Prepared For Customer

**355 Issues Identified**



### Issue 1 Front Door

Assigned To Developer  
Adjust the door for ease of locking

---



### Issue 2 Front Door

Assigned To Developer  
Cap missing from the middle hinge

---



### Issue 3 Front Door

Assigned To Developer  
Poor mastic application to the frame and not complete

---



### Issue 4 Front Door

Assigned To Developer  
Illustration close up of the poor finish behind the hinges

---



### Issue 5 Front Door

Assigned To Developer  
Letter box scratched

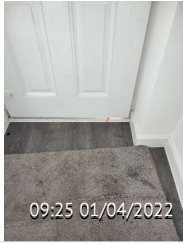
---



### Issue 6 Front Door

Assigned To Developer  
Door not clean and frame

---



### Issue 7 Front Door

Assigned To Developer  
Daylight seen to the bottom of the door

---



### Issue 8 Front Door

Assigned To Developer  
Screw rusting to the door chain

---



### Issue 9 Front Door

Assigned To Developer  
Underside of the threshold not sealed

---



### Issue 10 Front Door

Assigned To Developer  
Threshold scratched

---



### Issue 11 Front Door Entrance

Assigned To Developer  
Upstand to the canopy damaged

---



### Issue 12 Front Door Entrance

Assigned To Developer  
Screw covers missing from the canopy

---



### Issue 13 Front Door Entrance

Assigned To Developer

Canopy damaged to the front and underside is scuffed and to clean

---



### Issue 14 Front Door Entrance

Assigned To Developer

Fixing missing from the external light right hand side of the door

---



### Issue 15 Front Door Entrance

Assigned To Developer

Left hand external light not secure and scratched

---



### Issue 16 Front Door Entrance

Assigned To Developer

Left hand side of the canopy damaged

---



### Issue 17 Front Door Entrance

Assigned To Developer

Remove the cable clip and make good and stone work to clean

---



### Issue 18 Front

Assigned To Developer

Door scratched and to clean

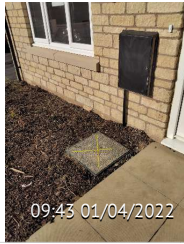
---



### Issue 19 Front Door Entrance

Assigned To Developer  
No lock fitted to the electric meter box and to re paint

---



### Issue 20 Front Door Entrance

Assigned To Developer  
Screws to tighten to the manhole lid

---



### Issue 21 Hall

Assigned To Developer  
Decorations to make good

---



### Issue 22 Hall

Assigned To Developer  
Decorations to make good and plaster work wavy to the splayed corner left hand side of the kitchen door

---



### Issue 24 Cloakroom

Assigned To Developer  
Gap to the door to the frame exceeds the tolerance of 4mm NHBC and uneven margins to the door to the frame at the top of the door

---



### Issue 25 Cloakroom

Assigned To Developer  
Adjust the keep as the door rattles within the opening

---



### Issue 26 Cloakroom

Assigned To Developer  
Door damaged and not clean

---



### Issue 27 Cloakroom

Assigned To Developer  
Drill hole seen within the frame to the keep and black plastic insert missing

---



### Issue 28 Cloakroom

Assigned To Developer  
Fixings to tighten to the cistern

---



### Issue 29 Cloakroom

Assigned To Developer  
View from the left hand side of the toilet flooring lifting and poor finish behind the toilet to the pipework and the pipework to seal around

---



### Issue 30 Cloakroom

Assigned To Developer  
Decorations to make good left hand side of the toilet

---

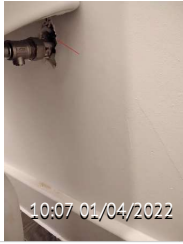


### Issue 31 Cloakroom

Assigned To Developer  
Decorations to make good right hand side of the toilet

---





### Issue 32 Cloakroom

Assigned To Developer  
Plaster work to make good around behind the toilet

---



### Issue 33 Cloakroom

Assigned To Developer  
Plaster work to make good behind the radiator

---



### Issue 34 Cloakroom

Assigned To Developer  
Decorations to make good

---



### Issue 35 Cloakroom

Assigned To Developer  
Flooring not fitted correctly

---



### Issue 36 Cloakroom

Assigned To Developer  
Decorations to make good

---



### Issue 37 Cloakroom

Assigned To Developer  
Poor mastic application to the wash basin

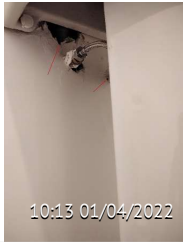
---



### Issue 38 Cloakroom

Assigned To Developer  
Tap loose to the wash basin

---



### Issue 39 Cloakroom

Assigned To Developer  
Plaster work to make good to the underside of the wash basin

---



### Issue 40 Cloakroom

Assigned To Developer  
Plaster work to make good and decorations to complete to the ceiling

---



### Issue 41 Cloakroom

Assigned To Developer  
Plaster work to make good and decorations to complete right hand side of the wash basin

---



### Issue 42 Cloakroom

Assigned To Developer  
Plaster work to make good

---



### Issue 43 Cloakroom

Assigned To Developer  
Decorations to make good and splayed internal corner not straight left hand side of the door

---



#### **Issue 44 Cloakroom**

Assigned To Developer

Poor detail to the pipe boxing only fitted due to the drainage is in the incorrect position behind the pedestal

---



#### **Issue 45 Cloakroom**

Assigned To Developer

Decorations to make good

---



#### **Issue 48 Kitchen And Dining**

Assigned To Developer

Poorly cut intermittent strip to the frame

---



#### **Issue 49 Kitchen And Dining**

Assigned To Developer

Damaged intermittent strip to the bottom left hand frame

---



#### **Issue 50 Kitchen And Dining**

Assigned To Developer

Door damaged

---



#### **Issue 51 Kitchen And Dining**

Assigned To Developer

Door handle not level

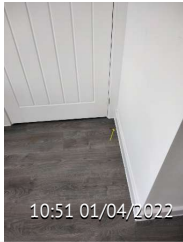
---



### Issue 52 Kitchen And Dining

Assigned To Developer  
Door not closing and damaged

---



### Issue 53 Kitchen And Dining

Assigned To Developer  
Flooring lifting right hand side of the hall door

---



### Issue 54 Kitchen And Dining

Assigned To Developer  
Paint runs to the skirting seen

---



### Issue 55 Kitchen And Dining

Assigned To Developer  
Plaster work to make good to the radiator brackets below the front window

---



### Issue 56 Kitchen And Dining

Assigned To Developer  
Hole to fill and paint to the radiator bracket below the front window

---



### Issue 57 Kitchen And Dining

Assigned To Developer  
Hole to fill and paint behind the radiator to the front window and decorations to complete

---



### Issue 58 Kitchen And Dining

Assigned To Developer  
Decorations to make good

---



### Issue 59 Kitchen And Dining

Assigned To Developer  
Glass scratched

---



### Issue 60 Kitchen And Dining

Assigned To Developer  
Plaster work and decorations to complete to the underside of the window board to the front window

---



### Issue 61 Kitchen And Dining

Assigned To Developer  
Decorations to make good to the ceiling

---



### Issue 62 Kitchen And Dining

Assigned To Developer  
Flooring lifting and latex seen to the skirting and paint runs to the wall

---



### Issue 63 Kitchen And Dining

Assigned To Developer  
Edging strip missing from the worktop support and decorations to make good

---



### Issue 64 Kitchen And Dining

Assigned To Developer

Poor plaster finish and decorations to make good to the skirting

---



### Issue 65 Kitchen And Dining

Assigned To Developer

Plaster work to make good

---



### Issue 66 Kitchen And Dining

Assigned To Developer

Trv not secure

---



### Issue 67 Kitchen And Dining

Assigned To Developer

Screws to tighten to the radiator brackets left hand side of the utility

---

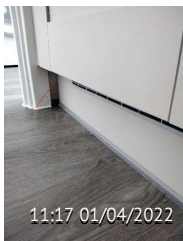


### Issue 68 Kitchen And Dining

Assigned To Developer

Plaster work to make good below the radiator and decorations to make good

---



### Issue 69 Kitchen And Dining

Assigned To Developer

Skirting missing below the fridge freezer housing

---



### Issue 70 Kitchen And Dining

Assigned To Developer

Vent grill not fitted correctly to the fridge freezer plinth

---



### Issue 71 Kitchen

Assigned To Developer

Remove the debris from below the base units below the window

---



### Issue 72 Kitchen

Assigned To Developer

Remove debris from below the base units below the window

---



### Issue 73 Kitchen And Dining

Assigned To Developer

No base unit leg clips fitted to the plinths

---

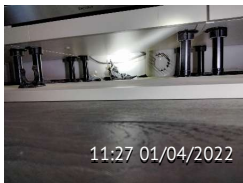


### Issue 74 Kitchen

Assigned To Developer

Mains water isolation has been fitted below the base unit and mains water pipe should be insulated

---



### Issue 75 Kitchen

Assigned To Developer

Remove debris and surplus materials from the bottom of the base units to the oven wall

---



### Issue 76 Kitchen

Assigned To Developer

Fridge freezer housing damaged

---



### Issue 77 Kitchen

Assigned To Developer  
Filler panel to seal to the fridge freezer

---



### Issue 78 Kitchen

Assigned To Developer  
Fridge freezer doors to align

---



### Issue 79 Kitchen

Assigned To Developer  
Plaster work to make good above the fridge freezer housing

---



### Issue 81 Kitchen

Assigned To Developer  
Dishwasher door damaged

---



### Issue 82 Kitchen

Assigned To Developer  
Worktop steam protection strip missing above the dishwasher

---





### Issue 83 Kitchen

Assigned To Developer

Remove the film from either side of the base units to the dishwasher

---



### Issue 84 Kitchen Kitchen

Assigned To Developer Dining

Base unit doors to align

---



### Issue 85 Kitchen

Assigned To Developer

Right hand window frame damaged

---

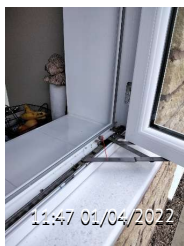


### Issue 86 Kitchen

Assigned To Developer

Decorations to make good and mastic application to tidy to the frame

---



### Issue 87 Kitchen

Assigned To Developer

Remove mortar from within the rebate

---



### Issue 88 Kitchen

Assigned To Developer

Sink base unit not flush with the dishwasher and remove marks from the worktop to the sink

---



### Issue 89 Kitchen

Assigned To Developer  
Sink base unit back board drilled incorrectly

---



### Issue 90 Kitchen

Assigned To Developer  
Sink unit waste pipe leaking

---



### Issue 91 Kitchen

Assigned To Developer  
Hinge covers missing

---



### Issue 92 Kitchen

Assigned To Developer  
Chimney hood not plumb

---



### Issue 93 Kitchen

Assigned To Developer  
Extractor not level

---



### Issue 94 Kitchen

Assigned To Developer  
Chimney hood not fitted tight to the ceiling

---



**Issue 95 Kitchen**  
Assigned To Developer  
Extractor not working

---



**Issue 96 Kitchen**  
Assigned To Developer  
Inconsistent finish to the wall and ceiling

---



**Issue 97 Kitchen**  
Assigned To Developer  
Inconsistent paint finish to the ceiling

---



**Issue 98 Kitchen**  
Assigned To Developer  
Wall unit door to realign

---



**Issue 99 Kitchen**  
Assigned To Developer  
Wall unit door damaged left hand side of the extractor

---



**Issue 100 Kitchen**  
Assigned To Developer  
Wall to fill and paint and under unit light loose

---



**Issue 101 Kitchen**  
Assigned To Developer  
Base unit doors and drawer to align

---



**Issue 102 Kitchen**  
Assigned To Developer  
Wall unit door damaged

---



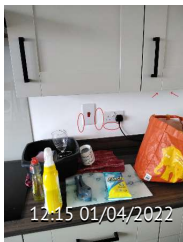
**Issue 103 Kitchen**  
Assigned To Developer  
Wall unit door to realign

---



**Issue 104 Kitchen**  
Assigned To Developer  
Hinge covers missing

---



**Issue 105 Kitchen**  
Assigned To Developer  
Decorations to make good

---



**Issue 106 Kitchen**  
Assigned To Developer  
Mastic application to complete and pencil marks to remove from the worktop

---



### Issue 107 Kitchen Store

Assigned To Developer  
Door handle loose

---



### Issue 108 Kitchen Store

Assigned To Developer  
Uneven margins to the door to the frame and the door is damaged

---



### Issue 109 Kitchen Store

Assigned To Developer  
Plaster work to make good

---



### Issue 110 Kitchen Store Cupboard

Assigned To Developer  
Plaster work to make good

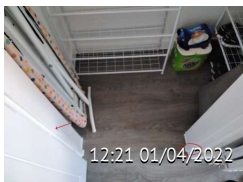
---



### Issue 111 Kitchen Store

Assigned To Developer  
Decorations to make good

---



### Issue 112 Kitchen Store

Assigned To Developer  
Decorations to make good

---



### Issue 113 Utility

Assigned To Developer  
Decorations to make good

---



### Issue 114 Utility

Assigned To Developer  
Door handle loose

---



### Issue 115 Utility

Assigned To Developer  
Door edge damaged

---



### Issue 116 Utility

Assigned To Developer  
Decorations to make good

---



### Issue 117 Utility

Assigned To Developer  
Decorations to make good

---



### Issue 118 Utility

Assigned To Developer  
Decorations to make good

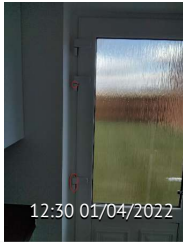
---



### Issue 119 Utility

Assigned To Developer  
Seal not fitted correctly within the door panel

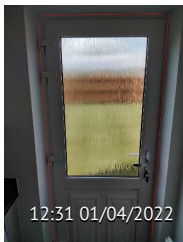
---



### Issue 120 Utility

Assigned To Developer  
Hinges damaged

---



### Issue 121 Utility

Assigned To Developer  
Poor application of mastic to the frame

---



### Issue 122 Utility

Assigned To Developer  
Decorations to make good and mastic application to complete

---



### Issue 123 Utility

Assigned To Developer  
Decorations to make good

---



### Issue 124 Utility

Assigned To Developer  
Mastic application to complete

---



### Issue 125 Utility

Assigned To Developer

Inconsistent paint finish seen and plaster work to make good above the boiler

---



### Issue 126 Utility

Assigned To Developer

Shroud to fit correctly to the boiler flue and clean plaster residue from the top of the boiler

---



### Issue 127 Utility

Assigned To Developer

Underside of the threshold to fully seal

---



### Issue 128 Utility

Assigned To Developer

Boiler flue shroud to fit

---



### Issue 129 Utility

Assigned To Developer

Hole to fill and paint behind the radiator

---



### Issue 130 Utility

Assigned To Developer

Door catching

---





### Issue 131 Utility

Assigned To Developer

Poor plaster finish below the boiler to the pipework

---



### Issue 132 Utility

Assigned To Developer

Door edge damaged

---



### Issue 133 Utility

Assigned To Developer

No extraction fitted within the utility to check

---



### Issue 134 Dining Room

Assigned To Developer

Door damaged

---



### Issue 135 Dining Room

Assigned To Developer

Quadrant not flush with the architrave

---

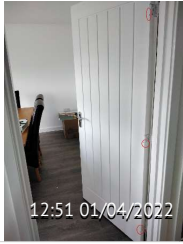


### Issue 136 Dining Room

Assigned To Developer

Black plastic insert fitted within the keep

---



### Issue 137 Dining Room

Assigned To Developer  
Door damaged

---



### Issue 138 Dining Room

Assigned To Developer  
Repair to the ceiling seen and the ceiling to fill and paint as highlighted in yellow

---



### Issue 139 Dining Room

Assigned To Developer  
Decorations to make good and door handle not straight

---



### Issue 140 Dining Room

Assigned To Developer  
Holes seen behind the radiator and the plastic clips missing from the top radiator brackets

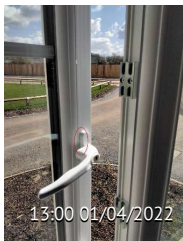
---



### Issue 141 Dining Room

Assigned To Developer  
Decorations to make good

---



### Issue 143 Dining Room

Assigned To Developer  
Left hand window handle damaged

---



### Issue 144 Dining Room

Assigned To Developer  
Window board to fill and paint

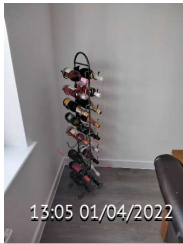
---



### Issue 145 Dining Room

Assigned To Developer  
Decorations to make good

---



### Issue 146 Dining Room

Assigned To Developer  
Decorations to make good

---



### Issue 147 Dining Room

Assigned To Developer  
Flooring lifting and wall to clean and decorations to make good to the skirting

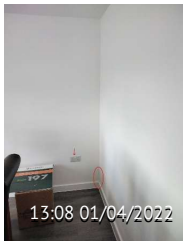
---



### Issue 148 Dining Room

Assigned To Developer  
Decorations to make good

---



### Issue 149 Dining Room

Assigned To Developer  
Decorations to make good

---



### Issue 150 Lounge

Assigned To Developer  
Poor cutting of the intermittent strip to the keep

---



### Issue 151 Lounge

Assigned To Developer  
Door edge over chopped to the top hinge and middle and bottom hinge

---



### Issue 152 Lounge

Assigned To Developer  
Door edge damaged

---



### Issue 153 Lounge

Assigned To Developer  
Door handle loose

---



### Issue 154 Lounge

Assigned To Developer  
Door catching

---



### Issue 155 Lounge

Assigned To Developer  
Decorations to make good and screw covers missing from the switch

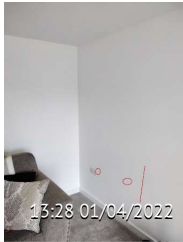
---



### Issue 156 Lounge

Assigned To Developer  
Door damaged

---



### Issue 157 Lounge

Assigned To Developer  
Wall to fill and paint

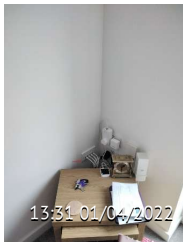
---



### Issue 158 Lounge

Assigned To Developer  
Inconsistent plaster finish to the ceiling

---



### Issue 159 Lounge

Assigned To Developer  
Decorations to make good

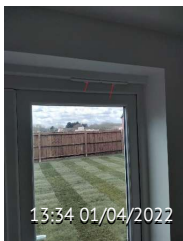
---



### Issue 160 Lounge

Assigned To Developer  
Daylight seen within the French door

---



### Issue 161 Lounge

Assigned To Developer  
Trickle vents not closing

---



### Issue 162 Lounge

Assigned To Developer  
French doors to align

---



### Issue 163 Lounge

Assigned To Developer  
Right hand French door beading damaged

---



### Issue 164 Lounge

Assigned To Developer  
French door damaged

---



### Issue 165 Lounge

Assigned To Developer  
Plaster work to make good

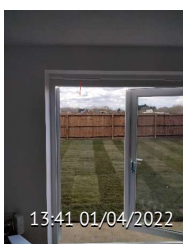
---



### Issue 166 Lounge

Assigned To Developer  
Plaster work to make good

---



### Issue 167 Lounge

Assigned To Developer  
Frame not fitted correctly as sagging

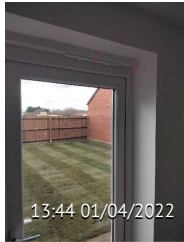
---



### Issue 168 Lounge

Assigned To Developer  
Right hand French door catching

---



### Issue 169 Lounge

Assigned To Developer  
Poor finish to the frame

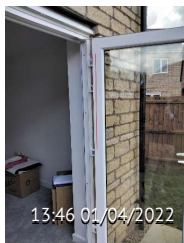
---



### Issue 170 Lounge

Assigned To Developer  
Left hand French door bead damaged

---



### Issue 171 Lounge

Assigned To Developer  
French door scratched

---



### Issue 172 Lounge

Assigned To Developer  
Right hand French door scratched

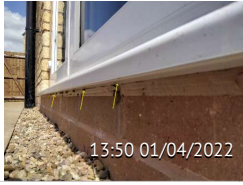
---



### Issue 173 Lounge

Assigned To Developer  
Excessive mastic joint above the French doors and left hand side of the French doors and remove all surplus mastic from the frame

---



### Issue 174 Lounge

Assigned To Developer

Mastic application to complete to the underside of the French door threshold

---



### Issue 175 Lounge

Assigned To Developer

Wall out of tolerance right hand side of the French doors measures 8mm which not within tolerance NHBC 9.1.3

---



### Issue 176 Lounge

Assigned To Developer

Radiator not fully heating up

---



### Issue 177 Lounge

Assigned To Developer

Decorations to make good

---



### Issue 178 Lounge

Assigned To Developer

Skirting to caulk and paint below the radiator

---



### Issue 179 Ground Floor Stairs To 1st Floor

Assigned To Developer

Decorations to make good

---





### Issue 180 Ground Floor Stairs To 1st Floor

Assigned To Developer  
Treads creaking

---



### Issue 181 Ground Floor Stairs To 1st Floor

Assigned To Developer  
Decorations to make good

---



### Issue 182 Ground Floor Stairs To 1st Floor

Assigned To Developer  
Decorations to make good

---



### Issue 183 Ground Floor Stairs To 1st Floor

Assigned To Developer  
Decorations to make good and string to cloak

---



### Issue 184 Ground Floor To 1st Floor Stairs

Assigned To Developer  
Decorations to make good

---



### Issue 185 Ground Floor To 1st Floor Stairs

Assigned To Developer  
Decorations to make good

---



### Issue 186 Ground Floor Stairs To 1st Floor

Assigned To Developer

Inconsistent paint finish to the right hand wall as touch ups seen and decorations to make good to the newel post

---



### Issue 187 Ground Floor To 1st Floor Stairs

Assigned To Developer

Decorations to make good

---



### Issue 188 Bedroom 2

Assigned To Developer

Door catching to the frame and architrave damaged to the top hinge

---



### Issue 190 Bedroom 2

Assigned To Developer

Door edge damaged

---



### Issue 191 Bedroom 2

Assigned To Developer

Screws missing from the switch and switch not level

---



### Issue 192 Bedroom 2

Assigned To Developer

Decorations to make good

---



### Issue 193 Bedroom 2

Assigned To Developer  
Remove surplus materials

---



### Issue 194 Bedroom 2

Assigned To Developer  
Wall to fill and paint within the right hand wardrobe

---



### Issue 195 Bedroom 2

Assigned To Developer  
Decorations to make good

---



### Issue 196 Bedroom 2

Assigned To Developer  
Poor plaster finish to the ceiling

---



### Issue 197 Bedroom 2

Assigned To Developer  
Plaster work to make good below the radiator

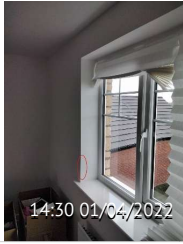
---



### Issue 198 Bedroom 2

Assigned To Developer  
Decorations to make good

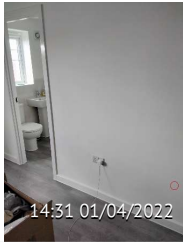
---



### Issue 199 Bedroom 2

Assigned To Developer  
Decorations to make good

---



### Issue 200 Bedroom 2

Assigned To Developer  
Wall to fill and paint

---



### Issue 201 Bedroom 2

Assigned To Developer  
Socket not level

---



### Issue 202 Ensuite 2

Assigned To Developer  
Switch is the incorrect way for the extractor on is off and off is on

---



### Issue 203 Ensuite 2

Assigned To Developer  
Toilet seat not fitted equally to the pan

---



### Issue 204 Ensuite 2

Assigned To Developer  
View from the right hand side of the toilet shroud to fit to the pipework to the cistern and the toilet pipe to seal around

---



### Issue 205 Ensuite 2

Assigned To Developer

Mastic application to complete left hand side of the toilet

---



### Issue 206 Ensuite 2

Assigned To Developer

Mastic application to complete

---



### Issue 207 Ensuite

Assigned To Developer

Shroud to fit to the pipework behind the pedestal

---



### Issue 208 Ensuite 2

Assigned To Developer

Mastic application to complete

---



### Issue 209 Ensuite 2

Assigned To Developer

Plaster work to make good left hand side of the shower

---



### Issue 210 Ensuite 2

Assigned To Developer

Decorations to make good

---



**Issue 211 Ensuite 2**  
Assigned To Developer  
Shower door runners to fit correctly

---



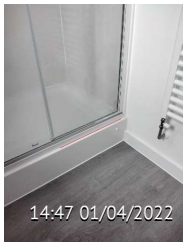
**Issue 212 Ensuite 2**  
Assigned To Developer  
Drilled tile seen to the shower frame

---



**Issue 213 Ensuite 2**  
Assigned To Developer  
Decorations to make good

---



**Issue 214 Ensuite 2**  
Assigned To Developer  
Mastic application to tidy

---



**Issue 215 Ensuite 2**  
Assigned To Developer  
Holes seen to the wall behind the towel rail and decorations to complete

---



**Issue 216 Ensuite 2**  
Assigned To Developer  
Architrave damaged

---



### Issue 217 Ensuite 2

Assigned To Developer  
Door handle loose

---



### Issue 218 Ensuite 2

Assigned To Developer  
Door damaged

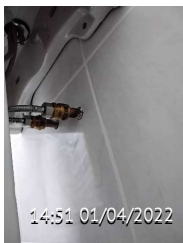
---



### Issue 219 Ensuite 2

Assigned To Developer  
Discolouration within the grout lines

---



### Issue 220 Ensuite 2

Assigned To Developer  
No fixings seen to the wash basin

---



### Issue 221 Ensuite 2

Assigned To Developer  
Mastic application to tidy

---



### Issue 222 Bedroom 3

Assigned To Developer  
Door catching

---



### Issue 223 Bedroom 3

Assigned To Developer  
Door damaged

---



### Issue 224 Bedroom 3

Assigned To Developer  
Uneven margins to the door to the frame

---



### Issue 225 Bedroom 3

Assigned To Developer  
Poorly cut intermittent strip

---



### Issue 226 Bedroom 3

Assigned To Developer  
Decorations to make good

---



### Issue 227 Bedroom 3

Assigned To Developer  
Decorations to make good

---



### Issue 228 Bedroom 3

Assigned To Developer  
View from the window stone work not inline

---





### Issue 229 Bedroom 3

Assigned To Developer  
Decorations to make good within the right hand wardrobe

---



### Issue 230 Bedroom 3

Assigned To Developer  
Poor plaster finish to the ceiling

---



### Issue 231 Bedroom 4

Assigned To Developer  
Door handle loose

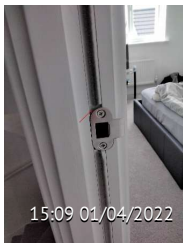
---



### Issue 232 Bedroom 4

Assigned To Developer  
Door bowed

---



### Issue 233 Bedroom 4

Assigned To Developer  
Poor cutting of the intermittent strip

---



### Issue 234 Bedroom 4

Assigned To Developer  
Decorations to make good

---



#### **Issue 235 Bedroom 4**

Assigned To Developer

Gap to the door to the frame exceeds the tolerance of 4mm NHBC 9.1.4 and the door isn't flush to the frame left hand side

---

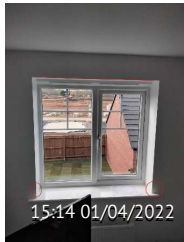


#### **Issue 236 Bedroom 4**

Assigned To Developer

Poor plaster finish to the ceiling

---

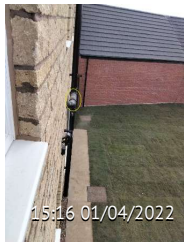


#### **Issue 237 Bedroom 4**

Assigned To Developer

Decorations to make good

---



#### **Issue 238 Bedroom 4**

Assigned To Developer

View from the window left hand side remove mortar droppings from the stack

---

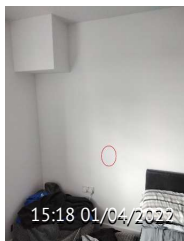


#### **Issue 239 Bedroom 4**

Assigned To Developer

Decorations to tidy

---



#### **Issue 240 Bedroom 4**

Assigned To Developer

Wall to fill and paint

---



#### Issue 241 Bedroom 4

Assigned To Developer  
Decorations to tidy

---



#### Issue 242 Bedroom 5

Assigned To Developer  
Door edge over chopped out for the hinges

---



#### Issue 243 Bedroom 5

Assigned To Developer  
Door catching to the carpet Door bar

---



#### Issue 244 Bedroom 5

Assigned To Developer  
Decorations to make good

---



#### Issue 245 Bedroom 5

Assigned To Developer  
Plaster work to make good

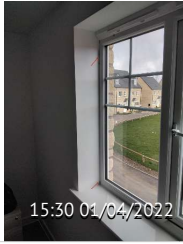
---



#### Issue 246 Bedroom 5

Assigned To Developer  
Decorations to make good

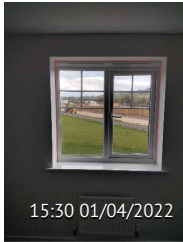
---



### Issue 247 Bedroom 5

Assigned To Developer  
Plaster work to make good

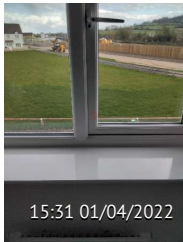
---



### Issue 248 Bedroom 5

Assigned To Developer  
Frame to seal

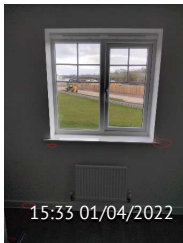
---



### Issue 249 Bedroom 5

Assigned To Developer  
Window frame damaged

---



### Issue 250 Bedroom 5

Assigned To Developer  
Decorations to make good

---



### Issue 251 Bathroom

Assigned To Developer  
Black plastic insert not fitted within the keep

---



### Issue 252 Bathroom

Assigned To Developer  
Bottom of the door edge catching at the carpet bar

---



### Issue 253 Bathroom

Assigned To Developer  
Uneven margins to the door to the frame

---



### Issue 254 Bathroom

Assigned To Developer  
Door handle loose

---



### Issue 255 Bathroom

Assigned To Developer  
Door damaged

---



### Issue 256 Bathroom

Assigned To Developer  
Bath has been set too high and skirting used to cloak which has left a poor finish requires the skirting being removed and using a plastic Cloaking strip the same colour as the bath panel and the bath panel to fit tight to the underside of the bath

---



### Issue 257 Bathroom

Assigned To Developer  
Tap loose

---



### Issue 258 Bathroom

Assigned To Developer  
Discolouration within the mastic application

---



### Issue 259 Bathroom

Assigned To Developer  
Electric shower not secure at the bottom

---



### Issue 260 Bathroom

Assigned To Developer  
Shower hose leaking

---



### Issue 261 Bathroom

Assigned To Developer  
Decorations to make good around the pipework to the towel rail

---



### Issue 262 Bathroom

Assigned To Developer  
Architrave damaged

---



### Issue 263 Bathroom

Assigned To Developer  
Mastic application to to make good

---



### Issue 264 Bathroom

Assigned To Developer  
Tap loose to the wash basin

---



### Issue 265 Bathroom

Assigned To Developer  
Shrouds to fit to the pipework behind the pedestal

---



### Issue 266 Bathroom

Assigned To Developer  
Shroud to fit to the pipework

---



### Issue 267 Bathroom

Assigned To Developer  
Toilet seat not fitted equally to the pan

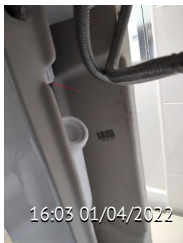
---



### Issue 268 Bathroom

Assigned To Developer  
View from the right hand side of the toilet flooring not complete and pipework to seal

---



### Issue 269 Bathroom

Assigned To Developer  
Waste pipe leaking behind the pedestal

---



### Issue 270 Bathroom

Assigned To Developer  
Ceiling to fill and paint

---



### Issue 271 1st Floor Landing

Assigned To Developer

Screw cover missing from the Bathroom light switch

---



### Issue 272 1st Floor Landing

Assigned To Developer

Plaster work to make good

---



### Issue 273 1st Floor Landing

Assigned To Developer

Plaster work to make good

---



### Issue 274 1st Floor Landing

Assigned To Developer

Poor cutting of the intermittent strip to the door frame leading to bedroom 1

---

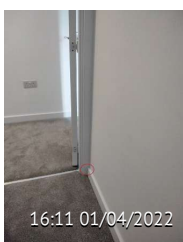


### Issue 275 1st To 2nd Floor Stairs

Assigned To Developer

Decorations to make good

---



### Issue 276 1st To 2nd Floor Stairs

Assigned To Developer

Decorations to make good

---

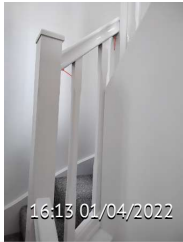




### Issue 277 1st To 2nd Floor Stairs

Assigned To Developer  
Right hand side of the stairs not square

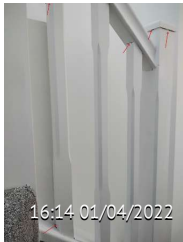
---



### Issue 278 1st To 2nd Floor Stairs

Assigned To Developer  
Decorations to tidy

---



### Issue 279 1st To 2nd Floor Stairs

Assigned To Developer  
Decorations to make good

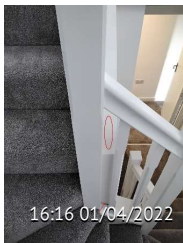
---



### Issue 280 1st To 2nd Floor Stairs

Assigned To Developer  
Decorations to make good

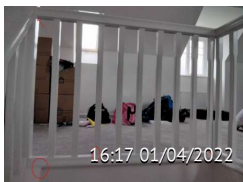
---



### Issue 281 1st To 2nd Floor Stairs

Assigned To Developer  
Decorations to make good

---



### Issue 282 1st Floor To 2nd Floor Stairs

Assigned To Developer  
Decorations to tidy

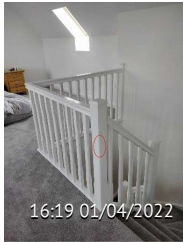
---



### Issue 283 1st To 2nd Floor Stairs

Assigned To Developer  
Decorations to make good

---



### Issue 284 1st To 2nd Floor Stairs

Assigned To Developer  
Newel post damaged

---



### Issue 285 1st To 2nd Floor Stairs

Assigned To Developer  
Decorations to make good

---



### Issue 286 1st To 2nd Floor Stairs

Assigned To Developer  
Plaster work to make good

---



### Issue 288 Bedroom 1

Assigned To Developer  
Left hand Front window glazing bead to fully fit and window frame damaged

---



### Issue 289 Bedroom 1

Assigned To Developer  
Decorations to make good left hand window

---



### Issue 290 Bedroom 1

Assigned To Developer  
Skirting to caulk and paint below the front left hand window

---



### Issue 291 Bedroom 1

Assigned To Developer  
Front Left hand window frame damaged

---



### Issue 292 Bedroom 1

Assigned To Developer  
Left hand front window stiff on opening

---



### Issue 293 Bedroom 1

Assigned To Developer  
View from the left hand window dormer chipped

---



### Issue 294 Bedroom 1

Assigned To Developer  
Decorations to make good

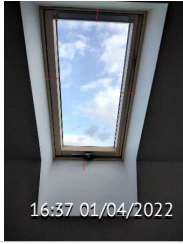
---



### Issue 295 Bedroom 1

Assigned To Developer  
Plaster work to make good to the front and to the wavy ceiling line

---



### Issue 296 Bedroom 1

Assigned To Developer

Front velux window frame decorations to tidy around and frame to seal

---



### Issue 297 Bedroom 1

Assigned To Developer

Plaster work to tidy and to the wavy ceiling line

---



### Issue 298 Bedroom 1

Assigned To Developer

Plaster work to tidy behind the right hand front radiator

---

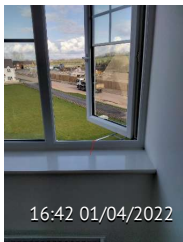


### Issue 299 Bedroom 1

Assigned To Developer

Decorations and plaster work to make to the front right hand window

---



### Issue 300 Bedroom 1

Assigned To Developer

Front Right hand window stiff on opening

---



### Issue 301 Bedroom 1

Assigned To Developer

Decorations to make good

---



### Issue 302 Bedroom 1

Assigned To Developer  
Decorations to make good

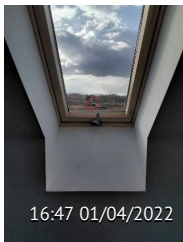
---



### Issue 303 Bedroom 1

Assigned To Developer  
Plaster work to make good and to the wavy ceiling line

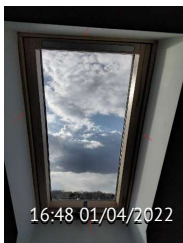
---



### Issue 304 Bedroom 1

Assigned To Developer  
Velux window glass scratched

---



### Issue 305 Bedroom 1

Assigned To Developer  
Rear velux window frame decorations to make good around the frame and frame to seal

---



### Issue 306 Bedroom 1

Assigned To Developer  
Decorations to make good and plaster work to make good to the wavy ceiling line and room thermostat loose

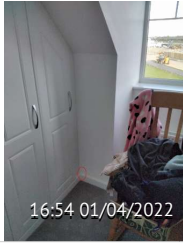
---



### Issue 308 Bedroom 1

Assigned To Developer  
Decorations to make good within the wardrobe

---



### Issue 309 Bedroom 1

Assigned To Developer  
Decorations to make good

---



### Issue 310 Ensuite 1

Assigned To Developer  
Bath scratched

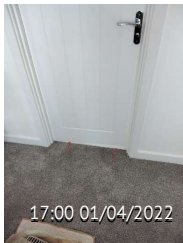
---



### Issue 311 Ensuite 1

Assigned To Developer  
Black plastic insert missing from within the keep

---



### Issue 312 Ensuite 1

Assigned To Developer  
Bottom of the door catching to the carpet bar

---



### Issue 313 Ensuite 1

Assigned To Developer  
Handle not straight and loose

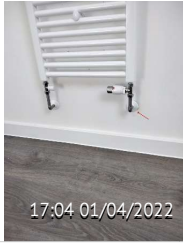
---



### Issue 314 Ensuite 1

Assigned To Developer  
Holes seen to the wall behind the towel rail

---



### Issue 315 Ensuite 1

Assigned To Developer  
Plaster work to make good

---



### Issue 316 Ensuite 1

Assigned To Developer  
Mastic application and decorations to make good to the shower and decorations to tidy to the skirting

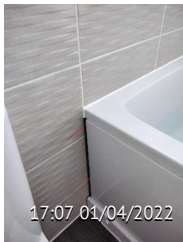
---



### Issue 318 Ensuite 1

Assigned To Developer  
Skirting cut short left hand side of the toilet and grout to complete

---



### Issue 319 Ensuite 1

Assigned To Developer  
Bath panel fitted too short and wall tiles to complete

---



### Issue 320 Ensuite 1

Assigned To Developer  
View from the right hand side of the toilet poor finish to the pipework mastic application to tidy and complete and shroud to fit to the toilet pipe

---



### Issue 321 Ensuite 1

Assigned To Developer  
Cistern not level

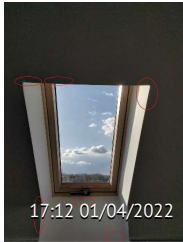
---



### Issue 322 Ensuite 1

Assigned To Developer  
Remove the grout residue from the tiles

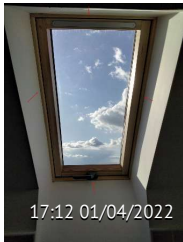
---



### Issue 323 Ensuite 1

Assigned To Developer  
Plaster work to make good

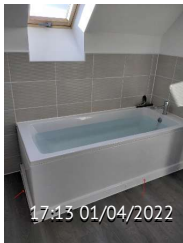
---



### Issue 324 Ensuite 1

Assigned To Developer  
Mastic application to complete to the velux frame

---



### Issue 325 Ensuite 1

Assigned To Developer  
Bath has been fitted too high and skirting has been fitted poor detail requires the skirting to be removed and replaced with a plastic Cloaking strip the same colour as the bath panel

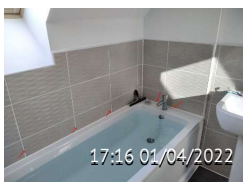
---



### Issue 326 Ensuite 1

Assigned To Developer  
Bath panel fitted too short and mastic application to complete

---

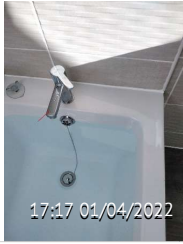


### Issue 327 Ensuite 1

Assigned To Developer  
Discolouration within the mastic application to the bath and grout lines to tidy to the wall tiles

---





### Issue 328 Ensuite 2

Assigned To Developer  
Tap loose to the bath

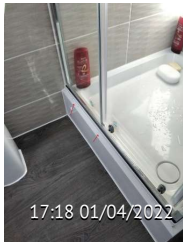
---



### Issue 329 Ensuite 1

Assigned To Developer  
Extractor not working

---



### Issue 330 Ensuite 1

Assigned To Developer  
Shower tray plinth damaged

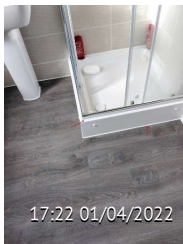
---



### Issue 331 Ensuite 2

Assigned To Developer  
Light rose to fit

---



### Issue 332 Ensuite 1

Assigned To Developer  
Mastic application to tidy

---



### Issue 333 Loft

Assigned To Developer  
Left hand dormer ceiling not Insulated

---



### Issue 334 Loft

Assigned To Developer  
Right hand front dormer ceiling not Insulated

---



### Issue 335 Loft

Assigned To Developer  
Decorations to make good and key missing for the hatch and cap to fit

---



### Issue 336 Front

Assigned To Developer  
X2 dormer windows not sealed to Bedroom 1 and main roof exposed rafters seen below the guttering

---



### Issue 337 Front Left Hand Side

Assigned To Developer  
Dry verge to secure with the correct fixing

---



### Issue 338 Front

Assigned To Developer  
Poor fitting of the window side trims to the kitchen and dining window frame

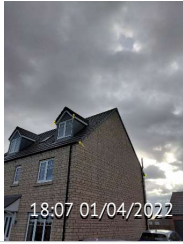
---



### Issue 339 Front

Assigned To Developer  
Downpipe not plumb

---



### Issue 340 Front Right Hand Side

Assigned To Developer  
Dry verge to secure with the correct fixing

---



### Issue 341 Front Right Hand Side

Assigned To Developer  
Gas meter box cracked

---



### Issue 342 Front Right Hand Side

Assigned To Developer  
Bonding cable not protected and to seal below the gas meter box

---



### Issue 343 Front Right Hand Side

Assigned To Developer  
Ensuite 1 extractor fan grill not fitted

---



### Issue 344 Front Right Hand Side

Assigned To Developer  
Stone work to clean and remove mortar

---



### Issue 345 Rear

Assigned To Developer  
Rawl plugs seen to the fence post

---



### Issue 346 Garage

Assigned To Developer

Dry verge to secure with the correct fixing

---



### Issue 347 Rear

Assigned To Developer

Nails seen as the close board fence not nailed to the bottom rail

---



### Issue 348 Rear

Assigned To Developer

Downpipe not plumb

---



### Issue 349 Rear

Assigned To Developer

End of the main roof rafters are exposed below the guttering

---

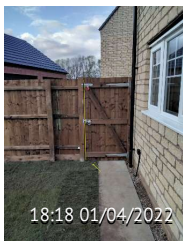


### Issue 350 Garage

Assigned To Developer

Pointing to complete and brickwork to clean

---

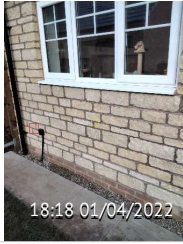


### Issue 351 Rear

Assigned To Developer

Gate catching on the turf and no clapping strip fitted to the Gate post

---



**Issue 352 Rear**

Assigned To Developer

Customer extra has not been fitted outside tap and external electric points

---

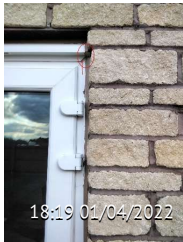


**Issue 353 Rear**

Assigned To Developer

Manhole lids to clean

---



**Issue 354 Rear**

Assigned To Developer

Right hand side of the French door trim not cut square

---



**Issue 355 Rear**

Assigned To Developer

Left hand side of the French door trim damaged and top of frame section not capped off

---



**Issue 356 Rear**

Assigned To Developer

Damaged stone work to be replaced

---



**Issue 357 Rear**

Assigned To Developer

Damage Stone work to be replaced

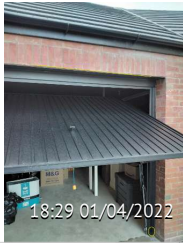
---



### Issue 359 Garage

Assigned To Developer  
Customers extra missing external light

---



### Issue 360 Garage

Assigned To Developer  
Pointing to complete and bottom of the garage door frame damaged

---



### Issue 361 Garage

Assigned To Developer  
Poor use of material for supporting the garage door should have used the galvanised L section which is already being fitted to the other sides of the doors

---



### Issue 362 Garage

Assigned To Developer  
Pointing to complete

---



### Issue 363 Drive

Assigned To Developer  
Tarmac to the drive damaged also the drive requires pressure washing

---



### Issue 364 Drive

Assigned To Developer  
Screws missing from both manhole lid

---